



Safety Stats
for the month of: October 2012

INJURY SAFETY STATS -	YTD	2011 Year End
Winter Stats:		
First Aid	5	7
Medical Only	2	1
Days Away Cases (DAW)	0	0
Total OSHA Recordables	2	1
Recordable Incidence Rate	0.98	0.41
Total Winter Hours Worked	408394	491090

Subcontractor Stats:		
First Aid	2	4
Medical Only	3	19
Days Away Cases (DAW)	3	4
Total OSHA Recordables	6	23
Recordable Incidence Rate	1.98	2.33
Total Subcontractor Hours	603997	1975526

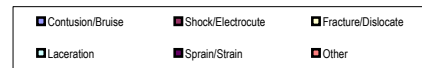
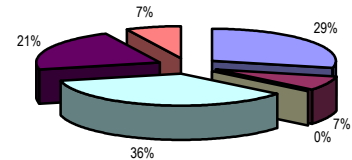
RECORDABLE INJURIES - Month	
Winter Injuries:	Supervisor:
None	
Subcontractor Injuries:	
MJHS-bruises & foot fracture	J.Haralson

FIRST AID INJURIES - Month	
Winter:	Supervisor:
None	
Subcontractor:	
Atl Chophouse-contusion-1st aid refused	R.Hefner

AUTO ACCIDENTS - Month
None to report

WINTER INCIDENTS - Month	
Job / Incident	Supervisor:
Sunrise Huntcliff-ceiling tile, molding, DW damage	R.Westhead
Univ. GA 400-leaks, ceiling tile damage	B.Rhoden
MJHS-sidewalk damage	J.Haralson
Spelman-truck has panel damage	P.Pilgrim
Cumulus Media-paper manual fire ash debris	B.Ruppel
State Capitol Ph V-roof, water damage	R.Parker
MJHS-lintel & brick damage	J.Haralson

WINTER / SUBCONTRACTOR Injuries by Type
Year to Date



OSHA ACTIVITY - YTD

SAFETY AUDITS - Month

- Score / Job
- 100 - Neely Research Ctr.
 - 97 - Lovejoy Rec / S.Police
 - 99 - MJHS
 - 100 - Atl. Chophouse
 - 100 - Ashland Greenville
 - 100 - Bailey Power Plant
 - 96 - Lovejoy Rec / S. Police
 - 97 - SW Airlines N Cargo

Milestones - Month