



Safety Stats
for the month of: November 2012

INJURY SAFETY STATS -	YTD	2011 Year End
Winter Stats:		
First Aid	5	7
Medical Only	2	1
Days Away Cases (DAW)	0	0
Total OSHA Recordables	2	1
Recordable Incidence Rate	0.89	0.41
Total Winter Hours Worked	447779	491090

Subcontractor Stats:		
First Aid	2	4
Medical Only	3	19
Days Away Cases (DAW)	3	4
Total OSHA Recordables	6	23
Recordable Incidence Rate	1.85	2.33
Total Subcontractor Hours	650169	1975526

RECORDABLE INJURIES - Month

Winter Injuries: None
Supervisor:

Subcontractor Injuries: None

FIRST AID INJURIES - Month

Winter: None
Supervisor:

Subcontractor: None

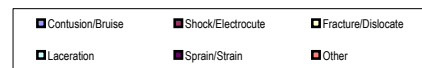
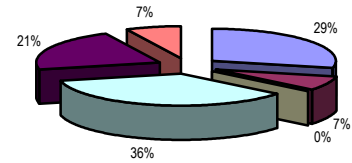
AUTO ACCIDENTS - Month

None to report

WINTER INCIDENTS - Month

Job / Incident	Supervisor:
Univ. Ctr @ 400 - minor leak, glass panel	B.Rhoden
MJHS - wrong column removed	J.Harralson
MJHS - wrong bricks removed	J.Harralson
Goldberg's/NY Times - minor demo cleanup	B.Blauser
MJHS - wrong lintel, brick removed	J.Harralson
23 Hundred - power line damage	J.Ruter

WINTER / SUBCONTRACTOR Injuries by Type
Year to Date



OSHA ACTIVITY - YTD

SAFETY AUDITS - Month

Score / Job	97 - MJHS
100 - Lockheed	100 - Lockheed
100 - SW Airlines	100 - Chophouse
100 - Lockheed	100 - American Air
100 - Lockheed	100 - Wall Street Journal
100 - Lovejoy	100 - Pandora
100 - Xaviant	100 - Sonesta Resort

Milestones - Month