



Safety Stats
for the month of: December 2012

INJURY SAFETY STATS -	YTD	2011 Year End
Winter Stats:		
First Aid	5	7
Medical Only	2	1
Days Away Cases (DAW)	0	0
Total OSHA Recordables	2	1
Recordable Incidence Rate	0.82	0.41
Total Winter Hours Worked	490756	491090

Subcontractor Stats:		
First Aid	2	4
Medical Only	5	19
Days Away Cases (DAW)	3	4
Total OSHA Recordables	8	23
Recordable Incidence Rate	2.38	2.33
Total Subcontractor Hours	670606	1975526

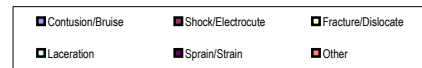
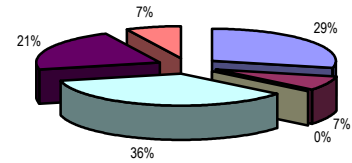
RECORDABLE INJURIES - Month	
Winter Injuries:	Supervisor:
None	
Subcontractor Injuries:	
MJHS - trip, tooth chipped	J. Haralson
Lovejoy - laceration on hand	JT Mote

FIRST AID INJURIES - Month	
Winter:	Supervisor:
None	
Subcontractor:	
MJHS - scratches on legs	J. Haralson

AUTO ACCIDENTS - Month
None to report

WINTER INCIDENTS - Month	
Job / Incident	Supervisor:
Chop House - power interruption	R.Hefner
Pine St. Flats - plumbing blowout, damage	W.Cherry
Pine St. Flats - plumbing leak, damage	W. Cherry
Sonesta - water damage	R. Lowell
Hampton Inn - water line damage	R.Parker
23Hundred - water leak	J. Ruter

WINTER / SUBCONTRACTOR Injuries by Type
Year to Date



OSHA ACTIVITY - YTD	
Gulf Breeze - No Citations	R.Parker

SAFETY AUDITS - Month	
Score / Job	
95 - Gulf Breeze	
99 - Car Dealership	
100 - MJHS	
100 - Lovejoy	
100 - Phibro Tech	
100 - Sonesta	

Milestones - Month