



Safety Stats
for the month of: January 2013

INJURY SAFETY STATS -	YTD	2012 Year End
Winter Stats:		
First Aid	0	5
Medical Only	0	2
Days Away Cases (DAW)	0	0
Total OSHA Recordables	0	2
Recordable Incidence Rate	0.00	0.82
Total Winter Hours Worked	30376	490756

Subcontractor Stats:		
First Aid	0	2
Medical Only	1	5
Days Away Cases (DAW)	0	3
Total OSHA Recordables	1	8
Recordable Incidence Rate	4.37	2.38
Total Subcontractor Hours	45794	670606

RECORDABLE INJURIES - Month

Winter Injuries: None
Supervisor:

Subcontractor Injuries: Sonesta H.Head- fall from ladder
Supervisor: R.Lowell

FIRST AID INJURIES - Month

Winter: None
Supervisor:

Subcontractor: None

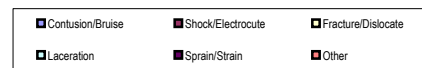
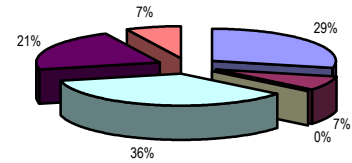
AUTO ACCIDENTS - Month

None to report

WINTER INCIDENTS - Month

Job / Incident	Supervisor:
Pine St - D/W leak - damage	W.Cherry
Pine St - Ttoilet leak - damage	W.Cherry
Pine St - Broken pipes - damage	W.Cherry
Sonesta H.Head - HVAC & water line - damage	R.Lowell
Pine St - Windy conditions, construction damage	W.Cherry
23 Hundred - Blasting complaint from nearby office	J.Ruter

WINTER / SUBCONTRACTOR Injuries by Type
Year to Date



OSHA ACTIVITY - YTD

SAFETY AUDITS - Month

Score / Job	Score / Job
97 - MJHS	98 - Ashland
100 - GPC Plant	100 - Braves All Star Grill
100 - Brandenburg Honeywell	100 - Pandora/Brooks/Shades
97 - Sonesta H.ilton Head	100 - Goldbergs NY Times
100 - Cintas	

Milestones - Month