



Safety Stats
for the month of: February 2013

INJURY SAFETY STATS -	YTD	2012 Year End
Winter Stats:		
First Aid	0	5
Medical Only	0	2
Days Away Cases (DAW)	0	0
Total OSHA Recordables	0	2
Recordable Incidence Rate	0.00	0.82
Total Winter Hours Worked	69565	490756

Subcontractor Stats:		
First Aid	0	2
Medical Only	1	5
Days Away Cases (DAW)	0	3
Total OSHA Recordables	1	8
Recordable Incidence Rate	2.22	2.38
Total Subcontractor Hours	90060	670606

RECORDABLE INJURIES - Month

Winter Injuries: None **Supervisor:**

Subcontractor Injuries: None

FIRST AID INJURIES - Month

Winter: None **Supervisor:**

Subcontractor: None

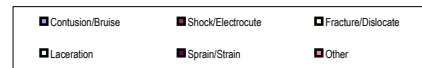
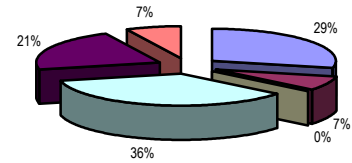
AUTO ACCIDENTS - Month

None to report

WINTER INCIDENTS - Month

Job / Incident	Supervisor:
Pine St-vent pipe, ceiling damage	W.Cherry
Pine St-water line, ceiling damage	W.Cherry
Mays HS-rain water, damages	J.Haralson
Sunrise-fire alarm problem	P.Pilgrim
Pine St-drain pipes, damages	W.Cherry
Pine St-mold	W.Cherry

WINTER / SUBCONTRACTOR Injuries by Type
Year to Date



OSHA ACTIVITY - YTD

SAFETY AUDITS - Month

- Score / Job
- 100 - Am Creosote Works
 - 100 - MJHS
 - 100 - Phibro Tech
 - 82 - Gulf Breeze
 - 100 - Progressive
 - 100 - Perimeter Mall Food Ct.
 - 100 - Renaissance on Peachtree
 - 100 - Phibro Tech
 - 100 - Lockheed B-1 Fan Rooms
 - 100 - Goldberg's Café, NY Times Bookstore

Milestones - Month