



Safety Stats
for the month of: March 2013

INJURY SAFETY STATS -	YTD	2012 Year End
Winter Stats:		
First Aid	0	5
Medical Only	0	2
Days Away Cases (DAW)	0	0
Total OSHA Recordables	0	2
Recordable Incidence Rate	0.00	0.82
Total Winter Hours Worked	118257	490756

Subcontractor Stats:		
First Aid	0	2
Medical Only	2	5
Days Away Cases (DAW)	0	3
Total OSHA Recordables	1	8
Recordable Incidence Rate	1.40	2.38
Total Subcontractor Hours	143231	670606

RECORDABLE INJURIES - Month

Winter Injuries: None
Supervisor:

Subcontractor Injuries:

FIRST AID INJURIES - Month

Winter: None
Supervisor:

Subcontractor:
MJHS - Crane pad mashed thumb tip J.Haralson

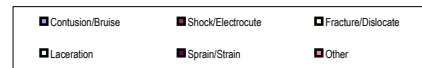
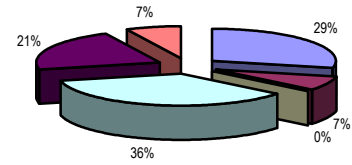
AUTO ACCIDENTS - Month

Whse- Wnter truck bumped car no damage S.Livengood
Lockheed-Winter truck dented/scratched a truck W.Harper

WINTER INCIDENTS - Month

Job / Incident	Supervisor:
Pine St - Fencing stolen	W.Cherry
PF Changs - Data cable damaged	B.Blauser
PF Changs - Water damage to elevator	B.Blauser
MJHS - Storm damage to utility box	J.Haralson
Pine St - Water damage from pipe burst	W.Cherry
Renaissance - Damages from HVAC leak	C.Greenway
Renaissance - Water damage from washer lines	C.Greenway

WINTER / SUBCONTRACTOR Injuries by Type
Year to Date



OSHA ACTIVITY - YTD

26-Mar Sonesta Resort, SC No Citations

SAFETY AUDITS - Month

Score / Job	
100 - Brave's All Star Grill	99 - Sunrise Huntcliff
100 - Atl Airport Tunnel	97 - MJHS
100 - GPC Plant	99 - Phibro Tech
100 - Bayer Crop Science	96 - Progressive
100 - Sunrise North Hills	
100 - Auburn Ave	
100 - Progressive	
100 - Lockheed L-45	
100 - Lockheed B4 Asbestos	
100 - Lockheed B4 Lead Paint	

Milestones - Month