

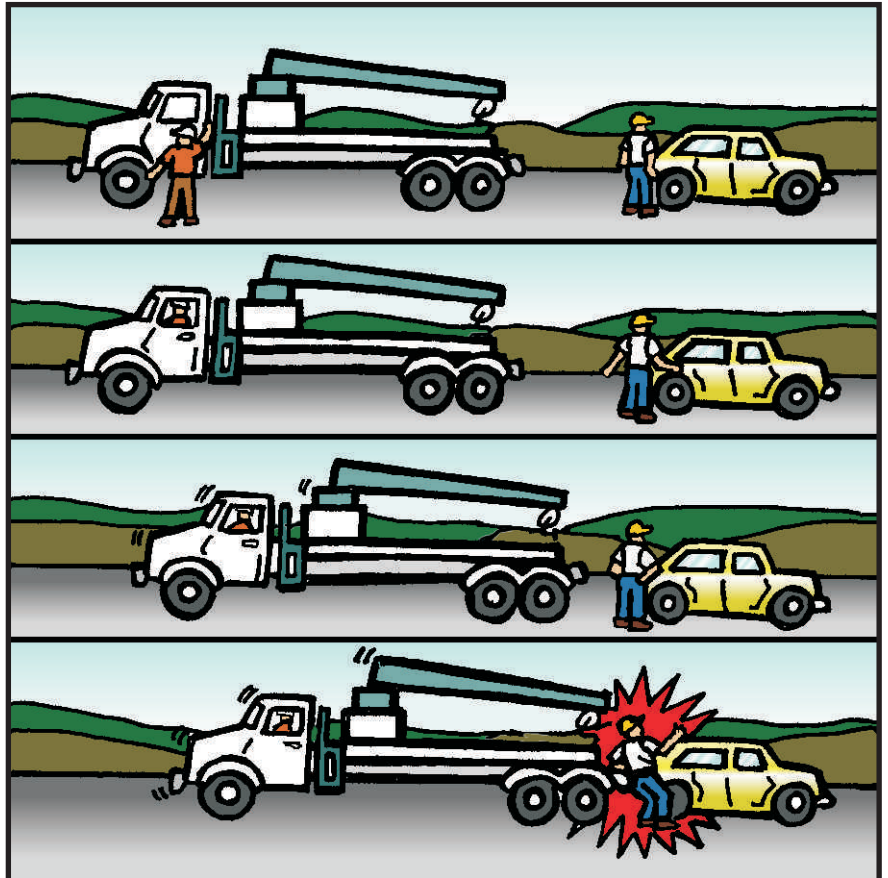
# TOOLBOX SAFETY TRAINING

Company \_\_\_\_\_ Location \_\_\_\_\_ Date \_\_\_\_\_

## Vol 16 - No 21 BOOM TRUCK ACCIDENT

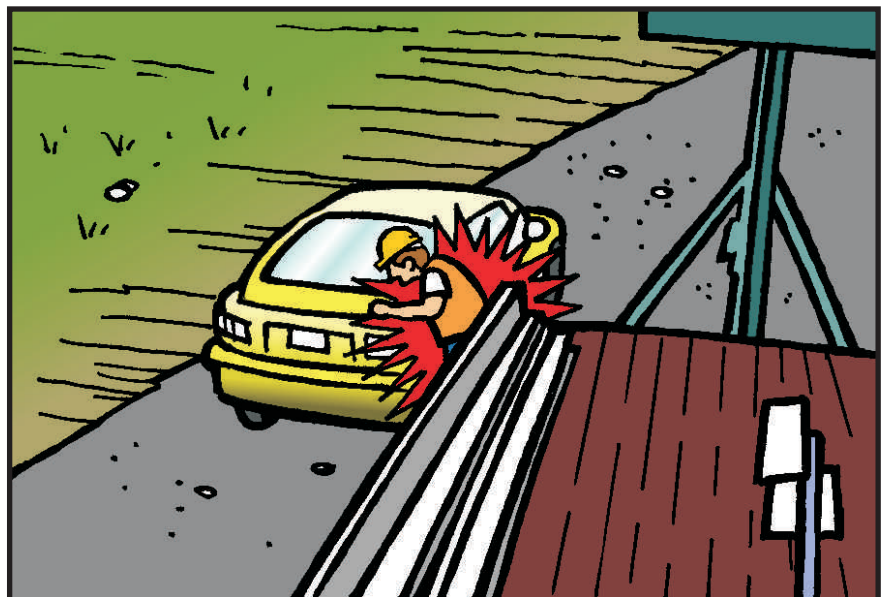
### Description of Accident:

The operator of a boom truck had spent the morning loading lumber onto the back of his truck. He was in the process of helping with the concrete forming at the construction site. The accident occurred when the operator got back into the truck and began backing up without checking his mirrors first. He backed up about 25 feet before hitting a worker, trapping him between the boom truck and an automobile parked on the job site.



### Safety Recommendations:

1. Always check behind your truck prior to backing up to ensure everything is clear.
2. Always use your mirrors while backing up.
3. Make sure your back up alarm is working every morning as part of your daily maintenance check.
4. If necessary use a spotter to assure safely backing up any heavy equipment.



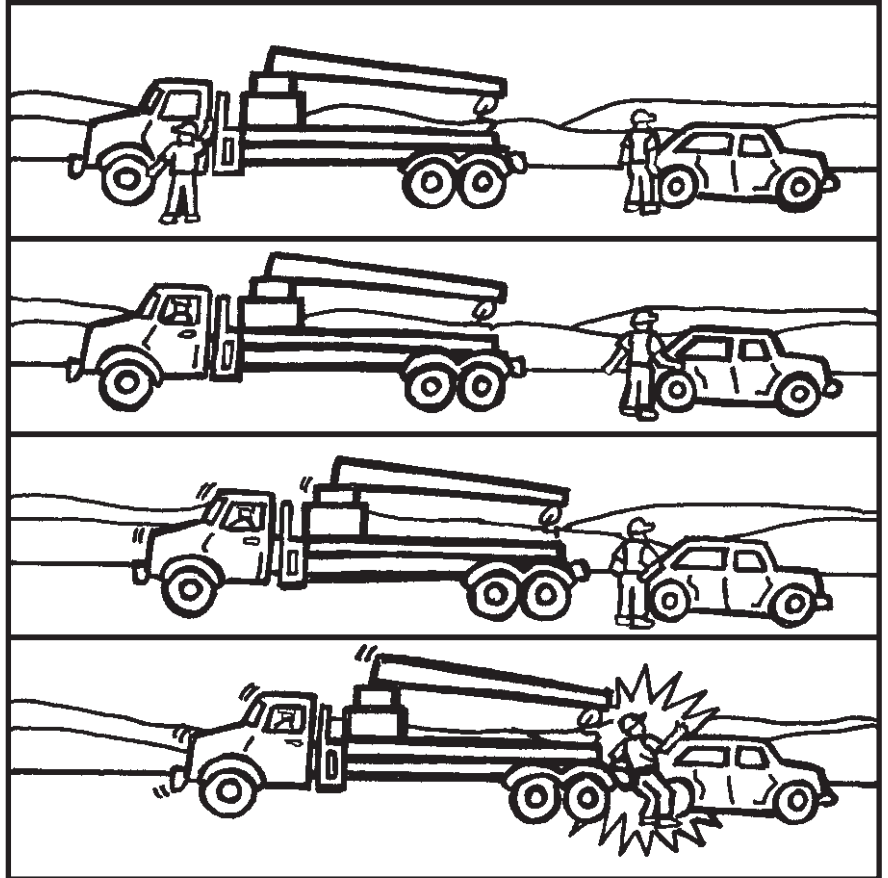
# TOOLBOX SAFETY TRAINING

Company \_\_\_\_\_ Location \_\_\_\_\_ Date \_\_\_\_\_

## Vol 16 - No 21 BOOM TRUCK ACCIDENT

### Description of Accident:

The operator of a boom truck had spent the morning loading lumber onto the back of his truck. He was in the process of helping with the concrete forming at the construction site. The accident occurred when the operator got back into the truck and began backing up without checking his mirrors first. He backed up about 25 feet before hitting a worker, trapping him between the boom truck and an automobile parked on the job site.



### Safety Recommendations:

1. Always check behind your truck prior to backing up to ensure everything is clear.
2. Always use your mirrors while backing up.
3. Make sure your back up alarm is working every morning as part of your daily maintenance check.
4. If necessary use a spotter to assure safely backing up any heavy equipment.

