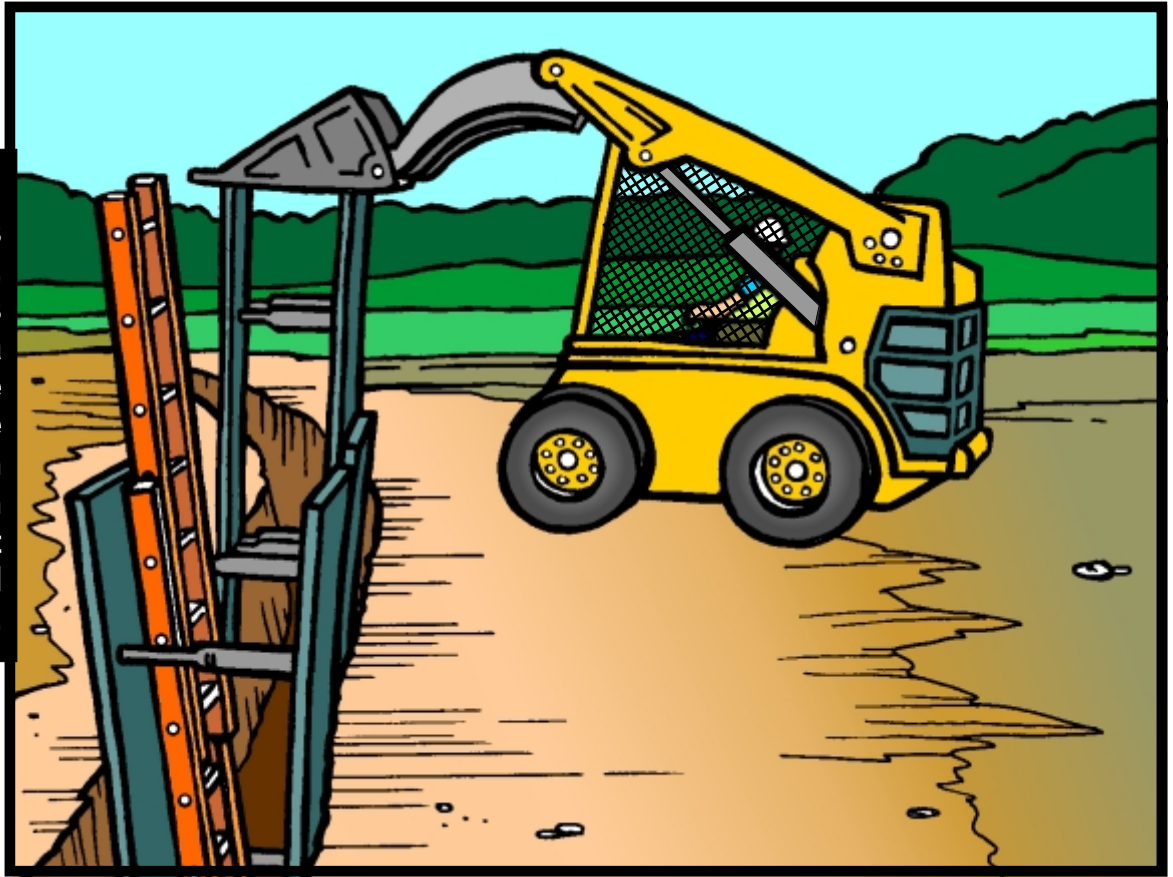


TOOLBOX SAFETY TRAINING

Company _____ Location _____ Date _____

Vol 17 - No 25 PROPER SHORING EQUIPMENT AND RIGGING

INCORRECT:
Speed shores were 12ft long, operator was having a difficult time placing the protection in the trench with the bobcat loader's limited ability.



When preparing for trenching protection it is always necessary to consider the size of equipment and rigging slings/straps that will make your operation work smoothly and safely. This not only allows for expedient shoring but also prevents damage of forms and straps. Employees will also benefit from avoiding pinch points and possible finger and hand crushing situations. The rigging slings should be able to swing forms into position without binding against trench walls. In addition, consider the mishap of disconnecting accidents. Shackles with screw pins are recommended for a secured rigged connection.

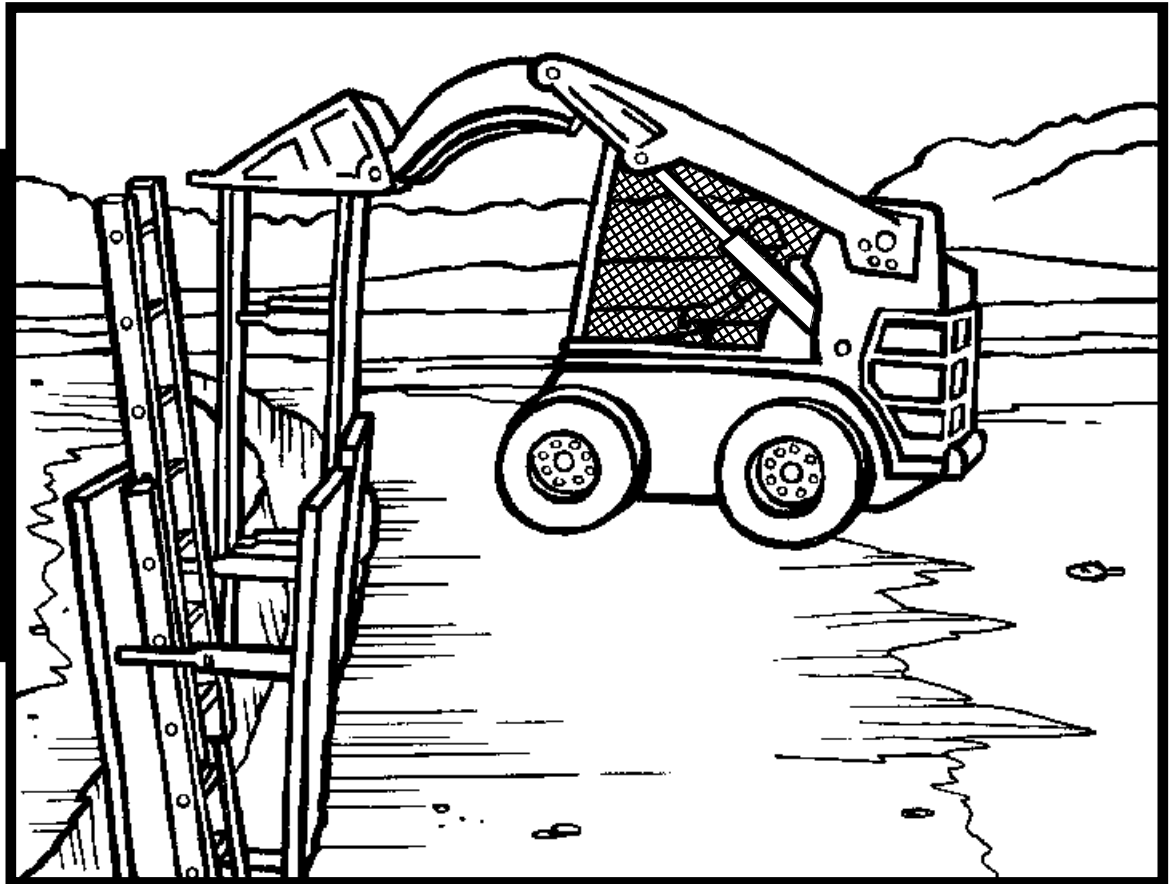
OSHA 1926.753(d)(2)(i)--Materials being hoisted shall be rigged to prevent unintentional displacement.

TOOLBOX SAFETY TRAINING

Company _____ Location _____ Date _____

Vol 17 - No 25 PROPER SHORING EQUIPMENT AND RIGGING

INCORRECT:
Speed shores were 12ft long, operator was having a difficult time placing the protection in the trench with the bobcat loader's limited ability.



When preparing for trenching protection it is always necessary to consider the size of equipment and rigging slings/straps that will make your operation work smoothly and safely. This not only allows for expedient shoring but also prevents damage of forms and straps. Employees will also benefit from avoiding pinch points and possible finger and hand crushing situations. The rigging slings should be able to swing forms into position without binding against trench walls. In addition, consider the mishap of disconnecting accidents. Shackles with screw pins are recommended for a secured rigged connection.

OSHA 1926.753(d)(2)(i)--Materials being hoisted shall be rigged to prevent unintentional displacement.