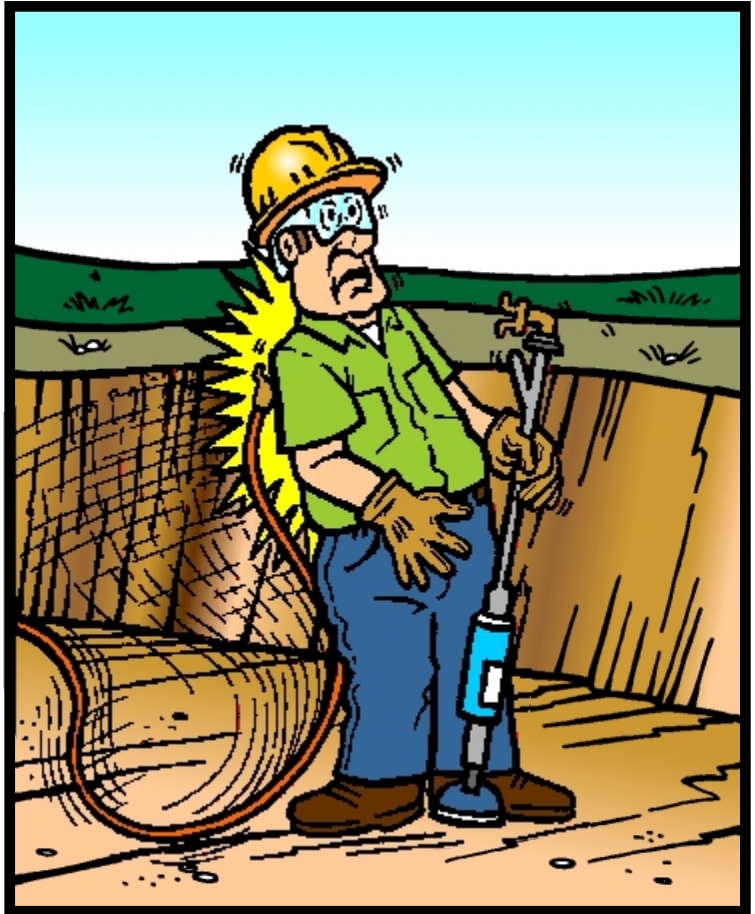
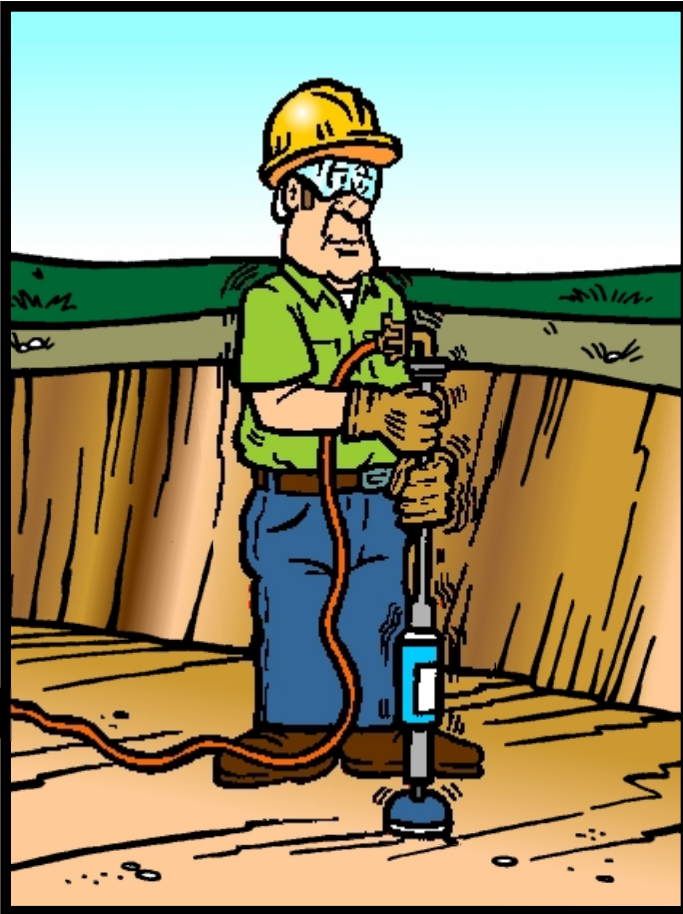


TOOLBOX SAFETY TRAINING

Company _____ Location _____ Date _____

Vol 17 - No 9 SAND RAMMER ACCIDENT



INCIDENT DESCRIPTION:

A 29 year old plumber's helper was getting prepared to compact some sand backfill in a small trench. He was to use a pneumatic sand rammer to perform this task. It had a brass ninety degree fitting that connected the tool to its hose line. The employee started using the rammer without prior instruction. Soon after he started using it, the fitting came loose causing the pressurized hose line to whip. It hit the employee on his hand and back causing minor injury. After investigation, the brass fitting was found to have worn threads. The sand rammer was taken out of service immediately.

SAFETY RECOMMENDATIONS:

1. Always inspect all equipment before use.
2. If a tool is found to be defective during an inspection, report it to your supervisor, red tag it and remove it from service.
3. Remember that eye protection is required and head and face protection is recommended unless mandated by company policy.
4. Always secure air hose connections to prevent accidental separation.

TOOLBOX SAFETY TRAINING

Company _____ Location _____ Date _____

Vol 17 - No 9 SAND RAMMER ACCIDENT



INCIDENT DESCRIPTION:

A 29 year old plumber's helper was getting prepared to compact some sand backfill in a small trench. He was to use a pneumatic sand rammer to perform this task. It had a brass ninety degree fitting that connected the tool to its hose line. The employee started using the rammer without prior instruction. Soon after he started using it, the fitting came loose causing the pressurized hose line to whip. It hit the employee on his hand and back causing minor injury. After investigation, the brass fitting was found to have worn threads. The sand rammer was taken out of service immediately.

SAFETY RECOMMENDATIONS:

1. Always inspect all equipment before use.
2. If a tool is found to be defective during an inspection, report it to your supervisor, red tag it and remove it from service.
3. Remember that eye protection is required and head and face protection is recommended unless mandated by company policy.
4. Always secure air hose connections to prevent accidental separation.