

TOOLBOX SAFETY TRAINING

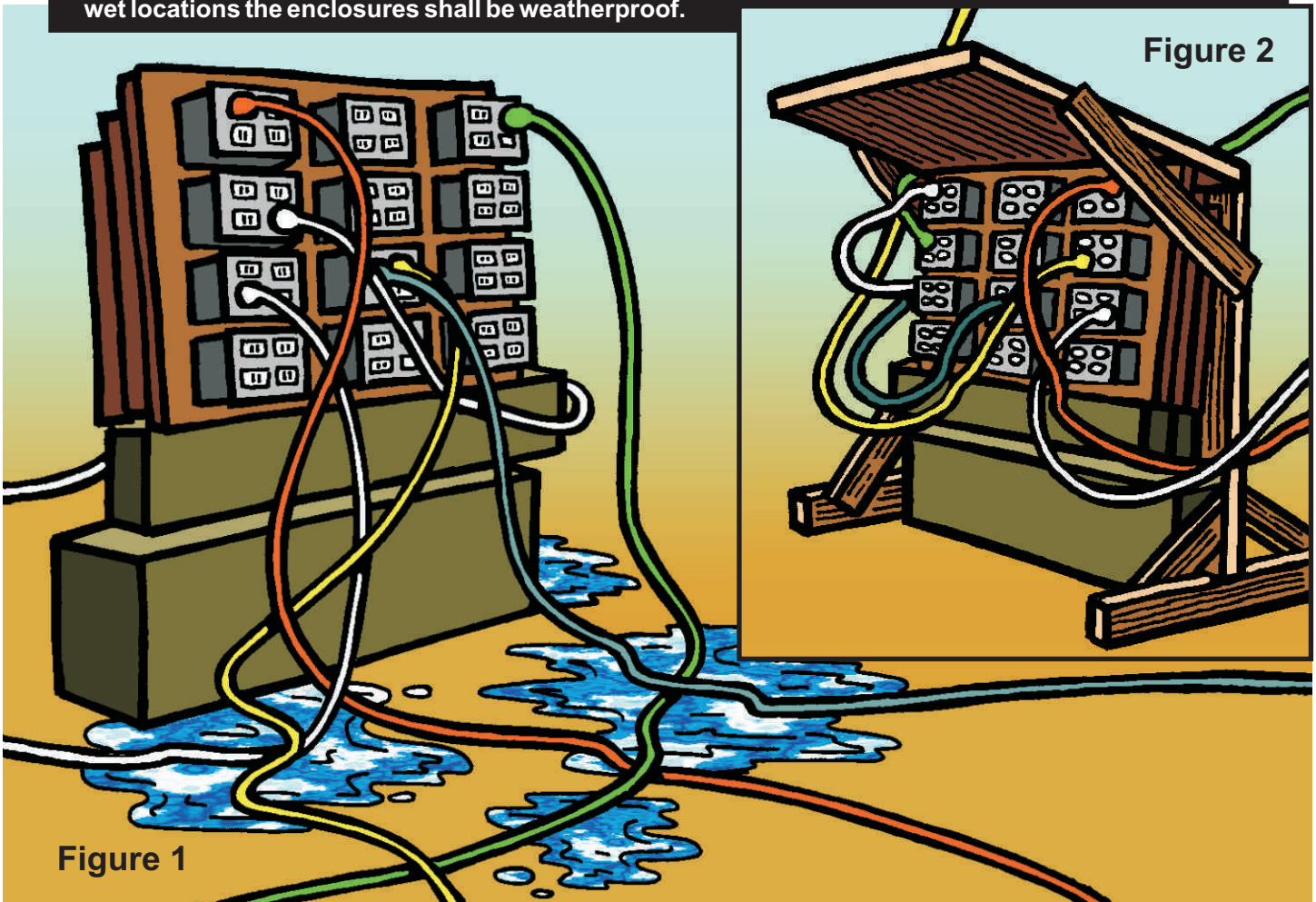
Company _____ Location _____ Date _____

Vol 16 - No 16 TEMPORARY PANELS & WEATHER HAZARDS

Protecting equipment from inclement weather conditions can easily be overlooked on a busy job site. This could be especially dangerous when it comes to electrical panels. As a building was in the process of being erected, temporary panels were set up throughout the job site. Initially, all panels had protection from the weather. However, the employees failed to ensure that as construction continued, each panel was not exposed to elements such as rain, sun and damp moisture days. After a few days, standing water was beginning to build up around the panels and breakers began to trip (Figure 1). Eventually, canopies were placed over the panels and wiring was run overhead, away from the standing water (Figure 2). The solution may seem simple, however preplanning and thinking ahead will help eliminate hazards that may cause issues in the future.

1926.405(b)(2) COVERS AND CANOPIES - All pull boxes, junction boxes and fittings shall be provided with covers. If metal covers are used, they shall be grounded. In energized installations each outlet box shall have a cover, faceplate or fixture canopy.

1926.405(e)(1) ENCLOSURES FOR DAMP OR WET LOCATION - Cabinets, fittings, and boxes. Cabinets, cutout boxes, fittings, boxes, and panel board enclosures in damp or wet locations shall be installed so as to prevent moisture or water from entering and accumulating within the enclosures. In wet locations the enclosures shall be weatherproof.



TOOLBOX SAFETY TRAINING

Company _____ Location _____ Date _____

Vol 16 - No 16 TEMPORARY PANELS & WEATHER HAZARDS

Protecting equipment from inclement weather conditions can easily be overlooked on a busy job site. This could be especially dangerous when it comes to electrical panels. As a building was in the process of being erected, temporary panels were set up throughout the job site. Initially, all panels had protection from the weather. However, the employees failed to ensure that as construction continued, each panel was not exposed to elements such as rain, sun and damp moisture days. After a few days, standing water was beginning to build up around the panels and breakers began to trip (Figure 1). Eventually, canopies were placed over the panels and wiring was run overhead, away from the standing water (Figure 2). The solution may seem simple, however preplanning and thinking ahead will help eliminate hazards that may cause issues in the future.

1926.405(b)(2) COVERS AND CANOPIES - All pull boxes, junction boxes and fittings shall be provided with covers. If metal covers are used, they shall be grounded. In energized installations each outlet box shall have a cover, faceplate or fixture canopy.

1926.405(e)(1) ENCLOSURES FOR DAMP OR WET LOCATION - Cabinets, fittings, and boxes. Cabinets, cutout boxes, fittings, boxes, and panel board enclosures in damp or wet locations shall be installed so as to prevent moisture or water from entering and accumulating within the enclosures. In wet locations the enclosures shall be weatherproof.

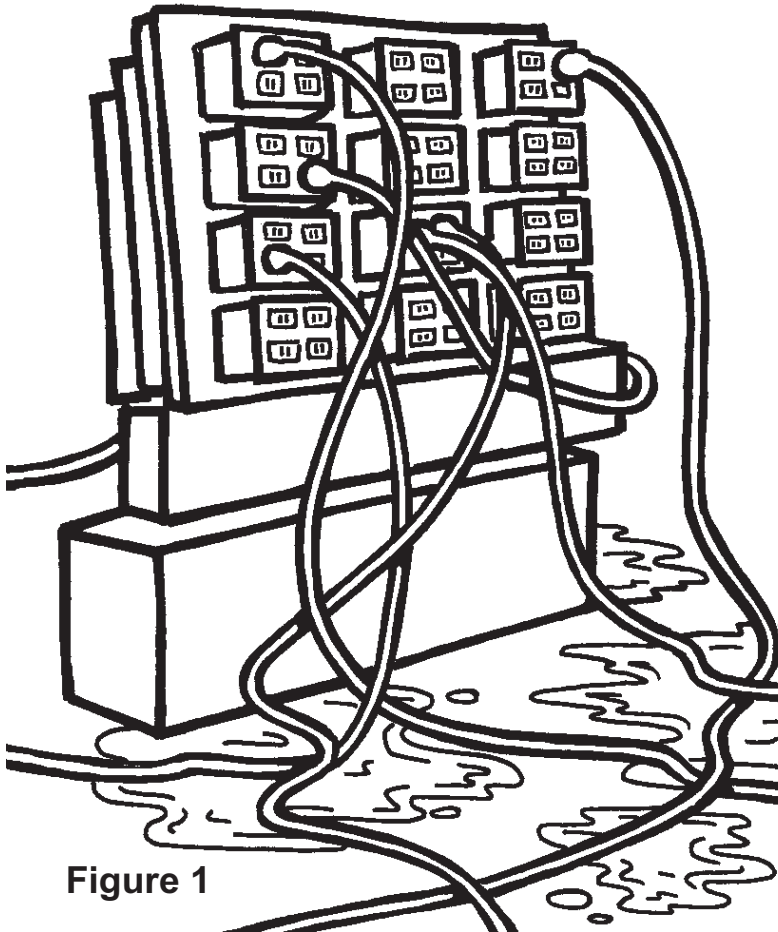


Figure 1

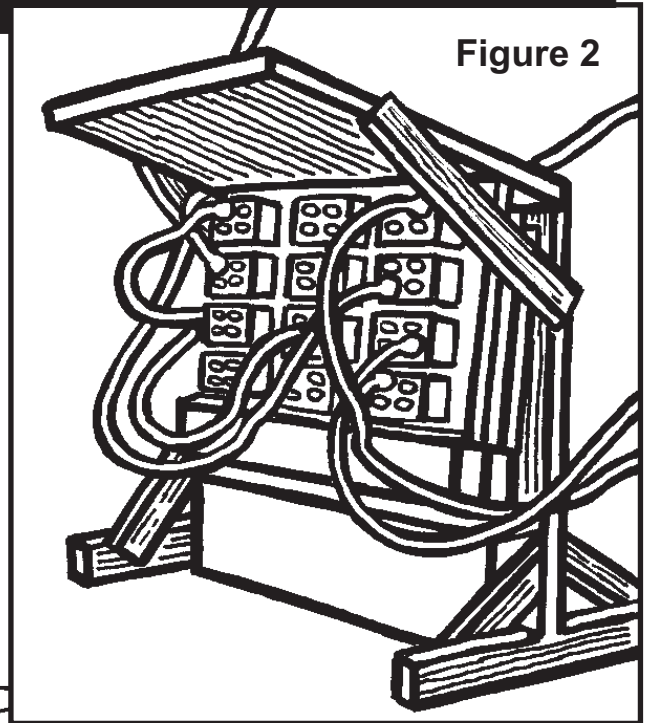


Figure 2